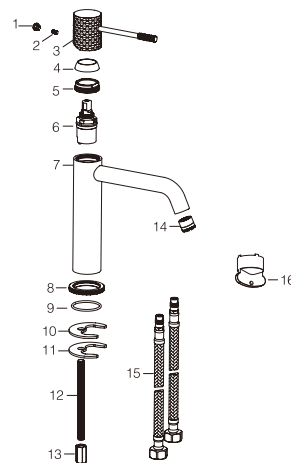


PRODUCT INFORMATION SUMMARY



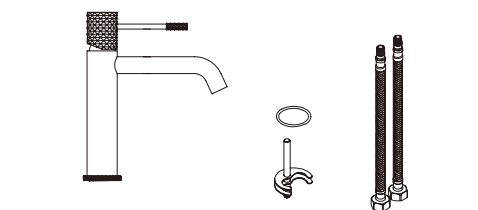
| Ref. | EAN | Finish |
|-------------|---------------|-------------------|
| BDG053-1 | 8435668034104 | Chrome |
| BDG053-1BGM | 8435668034111 | Black gun metal |
| BDG053-1NG | 8435668034128 | Matte black |
| BDG053-1ORC | 8435668034142 | Brushed rose gold |
| BDG053-1OC | 8435668034135 | Brushed gold |
| BDG053-1NQ | 8435668059572 | Brushed niquel |



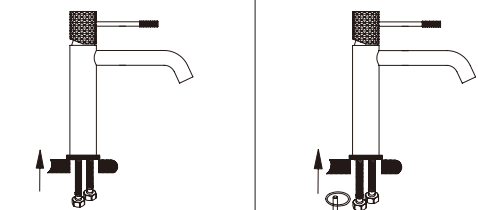
| CODE | NAME | MATERIAL | REF |
|------|-----------------|--|-------------|
| 1 | Button | ABS | |
| 2 | Screw | SUS 304 | |
| 3 | Handle | Brass | |
| 4 | Decorative cap | ABS | |
| 5 | Nut | Brass | |
| 6 | Cartridge | 26mm up | CRT096* |
| 7 | Body | Brass | |
| 8 | Base | Brass | |
| 9 | O-ring | NBR | |
| 10 | Rubber washer | NBR | |
| 11 | Metal plate | SUS 304 | |
| 12 | M8-Screw | SUS 304 | |
| 13 | M8-Nut | Brass | |
| 14 | Aerator | ABS/M16.5x1mm | SAT-AIR060* |
| 15 | Connecting Pipe | TAQ-PEX-DN6-ACB H3/8-M10X1 L12-500-R&B | SAT-HOSES7* |
| 16 | Aerator spanner | Plastic | |

* CONSULTAR PARA ACABADOS DE COLOR

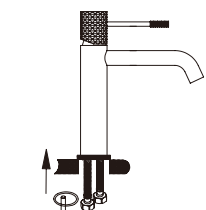
Installing instruction



Step 1. Check all spare parts ready

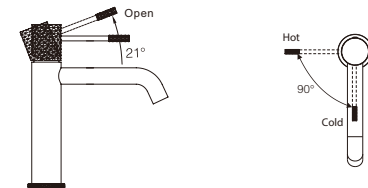


Step 2. Install inlet pipe to faucet body



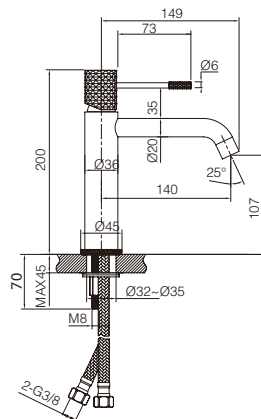
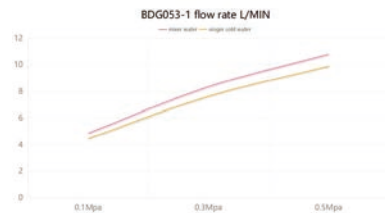
Step 3. Install screw stick to faucet body

Usage function instruction



FLOW RATE

| Detalles | |
|------------------------------------|----------|
| FLOW RATE REF | BDG053-1 |
| mixer water 0.1Mpa(L/MIN) | 4.86 |
| mixer water 0.3Mpa(L/MIN) | 8.34 |
| mixer water 0.5Mpa(L/MIN) | 10.78 |
| singer cold water 0.1Mpa(L/MIN) | 4.46 |
| singer cold water 0.3Mpa(L/MIN) | 7.62 |
| singer cold water 0.5Mpa(L/MIN) | 9.88 |



| | |
|-------------------------|---------------------|
| Product sizes (cm) | 30*21*5.9 |
| Weight (kg) | 0.92 |
| Guarantee | 5 years |
| Max Preassure (bar) | 5 |
| Min Preassure (bar) | 0.5 |
| Optimum preassure (bar) | 1-4 (Recommended 3) |
| Max. temperature | 85°C |
| Min temperature | 65°C |

CERTIFIES

That all our products, provided that they are used in normal conditions or installed in accordance with current standards, are guaranteed against any manufacturing defect for a period of five years, except for products purchased before January 1, 2020, which will have the mandatory coverage of 2 years from the date of invoice.

Requirements and exclusions

Failure to comply with the instructions for assembly, use and maintenance of our products on the packaging and in our catalogue and published on our website: www.imexproducts.es, releases IMEX PRODUCTS, S.L. from any liability.

In any case, the acceptance of the defect by our technical department is necessary. In addition, transport costs will be charged only in the event that on IMEX PRODUCTS, S.L. technician determines the proper functioning of our products.

IMEX PRODUCTS, S.L. will decide to repair the product or replace it. It will be necessary to present the purchase invoice.

Assembly, maintenance or repairs carried out by non-specialists are excluded from the warranty.

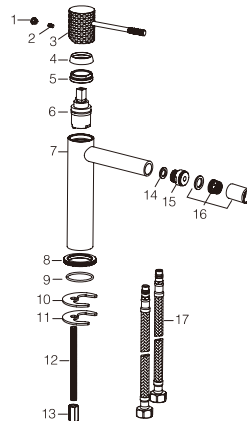
Wearing parts such as hoses, handles, seals, filters, aerators, etc. are not covered by the warranty.



PRODUCT INFORMATION SUMMARY



| Ref. | EAN | Finish |
|-------------|---------------|-------------------|
| BDG053-2 | 8435668034159 | Chrome |
| BDG053-2BGM | 8435668034166 | Black gun metal |
| BDG053-2NG | 8435668034173 | Matte black |
| BDG053-2ORC | 8435668034197 | Brushed rose gold |
| BDG053-2OC | 8435668034180 | Brushed gold |
| BDG053-2NQ | 8435668059589 | Brushed niquel |

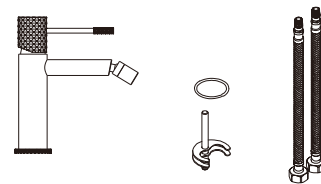


| CODE | NAME | MATERIAL | REF |
|------|-----------------|---|-------------|
| 1 | Button | ABS | |
| 2 | Screw | SUS 304 | |
| 3 | Handle | Brass | |
| 4 | Decorative cap | ABS | |
| 5 | Nut | Brass | |
| 6 | Cartridge | 26mm up | CRT096* |
| 7 | Body | Brass | |
| 8 | Base | Brass | |
| 9 | O-ring | NBR | |
| 10 | Rubber plate | NBR | |
| 11 | Metal plate | SUS 304 | |
| 12 | M-8 Screw | SUS 304 | |
| 13 | M-8 Nut | Brass | |
| 14 | Spout gasket | NBR | |
| 15 | Spout | ASSY | |
| 16 | Aerator | ABS / 16mm | SAT-AIR060* |
| 17 | Connecting Pipe | TAQ-PEX-DN6-ACB H3/8-M10X1 L12-500-R&B | SAT-HOSES7* |

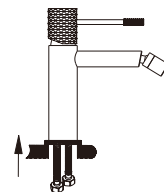
* CONSULTAR PARA ACABADOS DE COLOR

Installing instruction

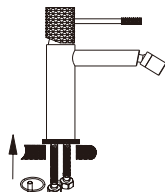
Step 1. Check all spare parts ready



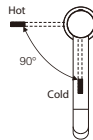
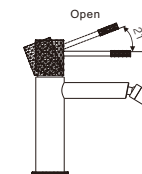
Step 2. Install inlet pipe to faucet body



Step 3. Install screw stick to faucet body

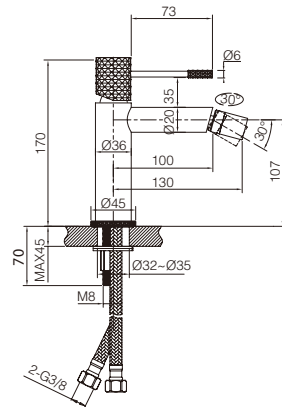
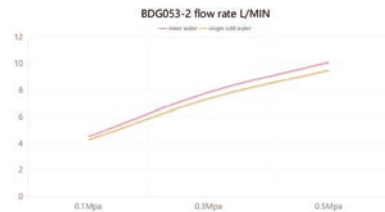


Usage function instruction



FLOW RATE

| Detalles | |
|------------------------------------|----------|
| FLOW RATE REF | BDG053-2 |
| mixer water 0.1Mpa(L/MIN) | 4.54 |
| mixer water 0.3Mpa(L/MIN) | 7.85 |
| mixer water 0.5Mpa(L/MIN) | 10.12 |
| singer cold water 0.1Mpa(L/MIN) | 4.28 |
| singer cold water 0.3Mpa(L/MIN) | 7.38 |
| singer cold water 0.5Mpa(L/MIN) | 9.52 |



| | |
|-------------------------|---------------------|
| Product sizes (cm) | 26.7*18.1*5.9 |
| Weight (kg) | 0.9 |
| Guarantee | 5 years |
| Max Preassure (bar) | 5 |
| Min Preassure (bar) | 0.5 |
| Optimum preassure (bar) | 1-4 (Recommended 3) |
| Max. temperature | 85°C |
| Min temperature | 65°C |

CERTIFIES

That all our products, provided that they are used in normal conditions or installed in accordance with current standards, are guaranteed against any manufacturing defect for a period of five years, except for products purchased before January 1, 2020, which will have the mandatory coverage of 2 years from the date of invoice.

Requirements and exclusions

Failure to comply with the instructions for assembly, use and maintenance of our products on the packaging and in our catalogue and published on our website: www.imexproducts.es, releases IMEX PRODUCTS, S.L. from any liability.

In any case, the acceptance of the defect by our technical department is necessary. In addition, transport costs will be charged only in the event that on IMEX PRODUCTS, S.L. technician determines the proper functioning of our products.

IMEX PRODUCTS, S.L. will decide to repair the product or replace it. It will be necessary to present the purchase invoice.

Assembly, maintenance or repairs carried out by non-specialists are excluded from the warranty.

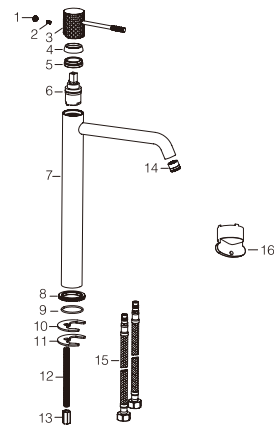
Wearing parts such as hoses, handles, seals, filters, aerators, etc. are not covered by the warranty.



PRODUCT INFORMATION SUMMARY

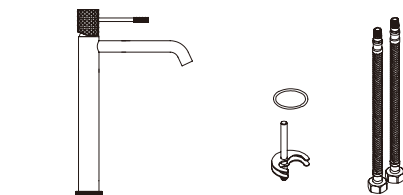


| Ref. | EAN | Finish |
|-------------|---------------|-------------------|
| BDG053-3 | 8435668034203 | Chrome |
| BDG053-3BGM | 8435668034210 | Black gun metal |
| BDG053-3NG | 8435668034227 | Matte black |
| BDG053-3ORC | 8435668034241 | Brushed rose gold |
| BDG053-3OC | 8435668034234 | Brushed gold |
| BDG053-3NQ | 8435668060158 | Brushed niquel |

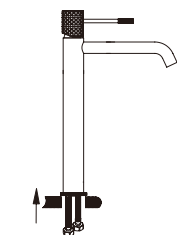


| CODE | NAME | MATERIAL | REF |
|------------------------------------|-----------------|--|-------------|
| 1 | Button | ABS | |
| 2 | Screw | SUS 304 | |
| 3 | Handle | Brass | |
| 4 | Decorative cap | ABS | |
| 5 | Nut | Brass | |
| 6 | Cartridge | 26mm up | CRT096* |
| 7 | Body | Brass | |
| 8 | Base | Brass | |
| 9 | O-ring | NBR | |
| 10 | Rubber plate | NBR | |
| 11 | Metal plate | SUS 304 | |
| 12 | M8-Screw | SUS 304 | |
| 13 | M8-Nut | Brass | |
| 14 | Aerator | ABS / M16.5x1mm | SAT-AIR060* |
| 15 | Connecting Pipe | TAQ-PEX-DN6-ACB H3/8-M10X1 L12-500-R&B | SAT-HOSES7* |
| 16 | Aerator Spanner | Plastic | |
| * CONSULTAR PARA ACABADOS DE COLOR | | | |

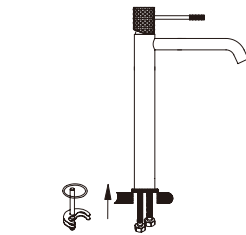
Installing instruction



Step 1. Check all spare parts ready

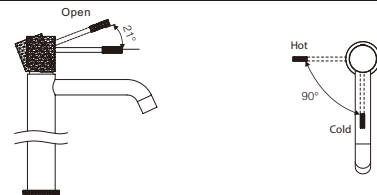


Step 2. Install inlet pipe to faucet body

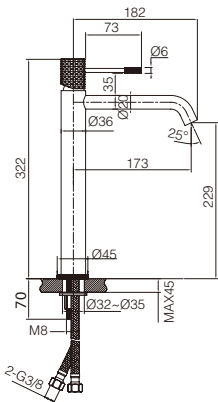
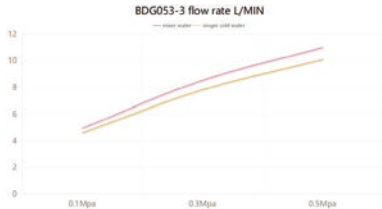


Step 3. Install screw stick to faucet body

Usage function instruction



| FLOW RATE | |
|------------------------------------|----------|
| Detalles | |
| FLOW RATE REF | BDG053-3 |
| mixer water 0.1Mpa(L/MIN) | 4.95 |
| mixer water 0.3Mpa(L/MIN) | 8.53 |
| mixer water 0.5Mpa(L/MIN) | 11.01 |
| singer cold water 0.1Mpa(L/MIN) | 4.61 |
| singer cold water 0.3Mpa(L/MIN) | 7.82 |
| singer cold water 0.5Mpa(L/MIN) | 10.1 |



| | |
|-------------------------|---------------------|
| Product sizes (cm) | 39*21*5.9 |
| Weight (kg) | 1.2 |
| Guarantee | 5 years |
| Max Preassure (bar) | 5 |
| Min Preassure (bar) | 0.5 |
| Optimum preassure (bar) | 1-4 (Recommended 3) |
| Max. temperature | 85°C |
| Min temperature | 65°C |

CERTIFIES

That all our products, provided that they are used in normal conditions or installed in accordance with current standards, are guaranteed against any manufacturing defect for a period of five years, except for products purchased before January 1, 2020, which will have the mand atory coverage of 2 years from the date of invoice.

Requirements and exclusions

Failure to comply with the instructions for assembly, use and maintenance of our products on the packaging and in our catalogue and published on our website: www.imexproducts.es, releases IMEX PRODUCTS, S.L. from any liability.

In any case, the acceptance of the defect by our technical department is necessary. In addition, transport costs will be charged only in the event that on IMEX PRODUCTS, S.L. technician determines the proper functioning of our products.

IMEX PRODUCTS, S.L. will decide to repair the product or replace it. It will be necessary to present the purchase invoice.

Assembly, maintenance or repairs carried out by non-specoalists re excluded from the warranty.

Wearing parts such as hoses, handles, seals, filters, aerators, etc. are not covered by the warranty.



PRODUCT INFORMATION SUMMARY

IMEX
BATH EQUIPMENTS

GÉNOVA
Series

IMEX
BATH EQUIPMENTS

GÉNOVA
Series

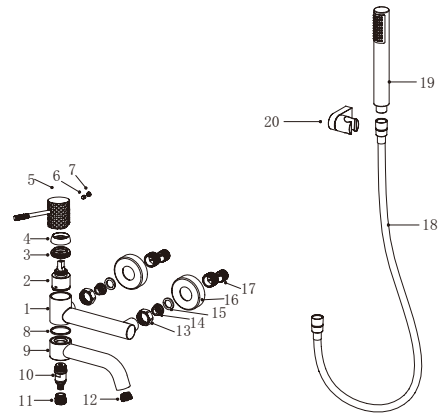
IMEX
BATH EQUIPMENTS

GÉNOVA
Series

IMEX
BATH EQUIPMENTS



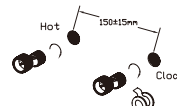
| Ref. | EAN | Finish |
|-------------|---------------|-------------------|
| BDG053-4 | 8435668034258 | Chrome |
| BDG053-4BGM | 8435668034265 | Black gun metal |
| BDG053-4NG | 8435668034272 | Matte black |
| BDG053-4ORC | 8435668034296 | Brushed rose gold |
| BDG053-4OC | 8435668034289 | Brushed gold |
| BDG053-4NQ | 8435668060165 | Brushed nickel |



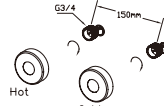
| CODE | NAME | MATERIAL | REF |
|------|---------------|---------------|-------------|
| 1 | Body | Brass | |
| 2 | Cartridge | 35mm | CRT006* |
| 3 | Nut | Brass | |
| 4 | Cover | ABS | |
| 5 | Handle | Brass | |
| 6 | Screw | SUS 304 | |
| 7 | Cover | ABS | |
| 8 | Washer | POM | |
| 9 | Outlet pipe | Brass | |
| 10 | Cartridge | Brass/24mm | |
| 11 | Connector | Brass | |
| 12 | Aerator | ABS/M18.5x1mm | SAT-AIR018* |
| 13 | Nut | Brass | |
| 14 | Valve | SUS 304 | |
| 15 | Rubber washer | NBR | |
| 16 | Cover | SUS 304 | |
| 17 | Cabrio leg | SUS 304 | |
| 18 | Hose | PVC | FLX010* |
| 19 | Shower hand | ABS | MDR015* |
| 20 | Shower base | ABS | SMD007* |

* CONSULTAR PARA ACABADOS DE COLOR

Installing instruction



Step 1. Connect curved leg with the inlet pipe inside the wall



Step 2. Connect decorative cover to curved leg

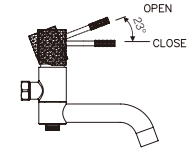
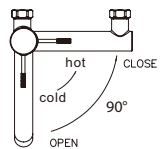


Step 3. Install shower faucet properly, and connect to curved leg on the wall

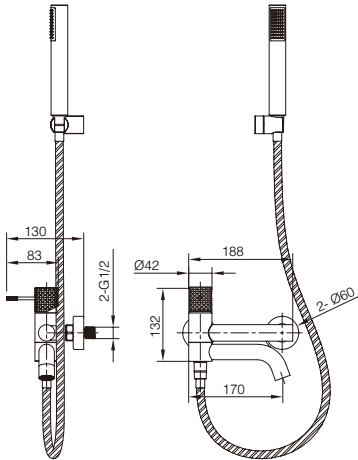
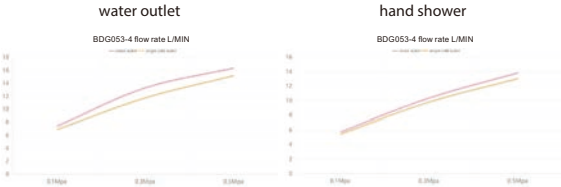


Step 4. Test function of shower set, clean the set

Usage function instruction



| Detalles | |
|--|----------|
| FLOW RATE REF | BDG053-4 |
| water outlet mixer water 0.1Mpa(L/MIN) | 7.41 |
| water outlet mixer water 0.3Mpa(L/MIN) | 13.33 |
| water outlet mixer water 0.5Mpa(L/MIN) | 16.38 |
| water outlet singer cold water 0.1Mpa(L/MIN) | 6.89 |
| water outlet singer cold water 0.3Mpa(L/MIN) | 11.79 |
| water outlet singer cold water 0.5Mpa(L/MIN) | 15.2 |
| hand shower mixer water 0.1Mpa(L/MIN) | 5.76 |
| hand shower mixer water 0.3Mpa(L/MIN) | 10.38 |
| hand shower mixer water 0.5Mpa(L/MIN) | 13.86 |
| hand shower singer cold water 0.1Mpa(L/MIN) | 5.46 |
| hand shower singer cold water 0.3Mpa(L/MIN) | 9.83 |
| hand shower singer cold water 0.5Mpa(L/MIN) | 13.07 |



| | |
|------------------------|---------------------|
| Product sizes (cm) | 28*16*12.2 |
| Weight (kg) | 1.85 |
| Guarantee | 5 years |
| Max Preasure (bar) | 5 |
| Min Preasure (bar) | 0.5 |
| Optimum preasure (bar) | 1-4 (Recommended 3) |
| Max. temperature | 85°C |
| Min temperature | 65°C |

CERTIFIES

That all our products, provided that they are used in normal conditions or installed in accordance with current standards, are guaranteed against any manufacturing defect for a period of five years, except for products purchased before January 1, 2020, which will have the mandatory coverage of 2 years from the date of invoice.

Requirements and exclusions

Failure to comply with the instructions for assembly, use and maintenance of our products on the packaging and in our catalogue and published on our website: www.imexproducts.es, releases IMEX PRODUCTS, S.L. from any liability.

In any case, the acceptance of the defect by our technical department is necessary. In addition, transport costs will be charged only in the event that on IMEX PRODUCTS, S.L. technician determines the proper functioning of our products.

IMEX PRODUCTS, S.L. will decide to repair the product or replace it. It will be necessary to present the purchase invoice.

Assembly, maintenance or repairs carried out by non-specialists are excluded from the warranty.

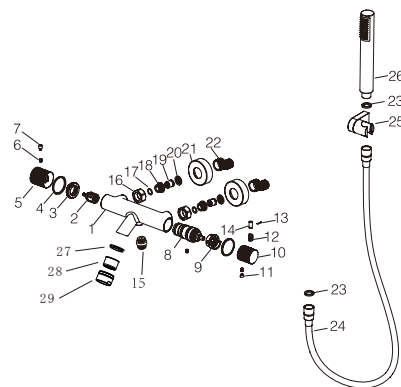
Wearing parts such as hoses, handles, seals, filters, aerators, etc. are not covered by the warranty.



PRODUCT INFORMATION SUMMARY



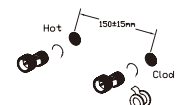
| Ref. | EAN | Finish |
|-------------|---------------|-------------------|
| BTG053-4 | 8435668042857 | Chrome |
| BTG053-4BGM | 8435668042864 | Black gun metal |
| BTG053-4NG | 8435668042871 | Matte black |
| BTG053-4ORC | 8435668042895 | Brushed rose gold |
| BTG053-4OC | 8435668042888 | Brushed gold |
| BTG053-4NQ | 8435668060196 | Brushed niquel |



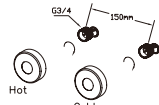
| CODE | NAME | MATERIAL | REF | CODE | NAME | MATERIAL | REF |
|------|--------------|----------|---------|------|---------------|---------------|---------|
| 1 | Body | Brass | | 20 | Rubber washer | NBR | |
| 2 | Cartridge | 25mm up | | 21 | Cover | SUS 304 | |
| 3 | Nut | Brass | | 22 | Cabrio leg | SUS 304 | |
| 4 | Washer | POM | | 23 | Rubber washer | NBR | |
| 5 | Handle | Brass | | 24 | Hose | SUS 304 / PVC | FLX010* |
| 6 | Screw | SUS 304 | | 25 | Shower seat | ABS | SMD007* |
| 7 | Handle lever | Brass | | 26 | Shower hand | ABS | MDR015* |
| 8 | Cartridge | 32mm | CRT012* | 27 | Rubber washer | NBR | |
| 9 | Washer | POM | | 28 | Aerator | 24mm | |
| 10 | Handle | Brass | | 29 | percolator | SUS 304 | |
| 11 | Cover | ABS | | | | | |
| 12 | Spring | SUS 304 | | | | | |
| 13 | Pin | SUS 304 | | | | | |
| 14 | Handle lever | Brass | | | | | |
| 15 | Connect | Brass | | | | | |
| 16 | Nut | Brass | | | | | |
| 17 | O-ring | NBR | | | | | |
| 18 | Screw | SUS 304 | | | | | |
| 19 | Valve | ABS | | | | | |

* CONSULTAR PARA ACABADOS DE COLOR

Installing instruction



Step 1.Connect curved leg with the inlet pipe inside the wall



Step 2.Connect decorate cover to curved leg

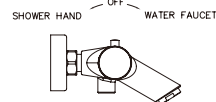
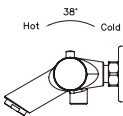


Step 3.Install shower faucet properly,and connect to curved leg on the wall

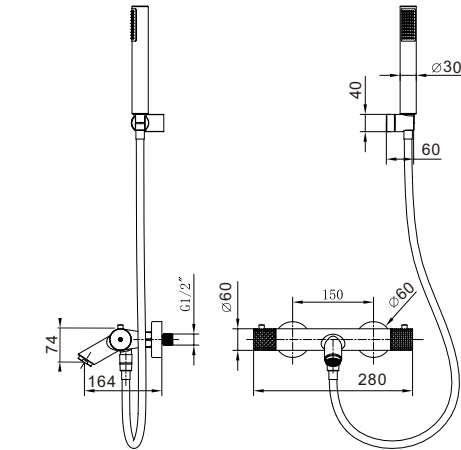
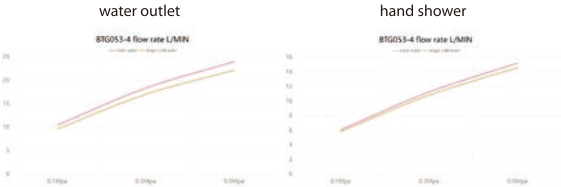


Step 4.Test function of shower set, clean the set

Usage function instruction



| FLOW RATE | |
|--|----------|
| Detalles | |
| FLOW RATE REF | BTG053-4 |
| water outlet mixer water 0.1Mpa(L/MIN) | 10.48 |
| water outlet mixer water 0.3Mpa(L/MIN) | 18.37 |
| water outlet mixer water 0.5Mpa(L/MIN) | 24.02 |
| water outlet singer cold water 0.1Mpa(L/MIN) | 9.65 |
| water outlet singer cold water 0.3Mpa(L/MIN) | 17.04 |
| water outlet singer cold water 0.5Mpa(L/MIN) | 22.2 |
| hand shower mixer water 0.1Mpa(L/MIN) | 6.05 |
| hand shower mixer water 0.3Mpa(L/MIN) | 11.24 |
| hand shower mixer water 0.5Mpa(L/MIN) | 15.2 |
| hand shower singer cold water 0.1Mpa(L/MIN) | 5.82 |
| hand shower singer cold water 0.3Mpa(L/MIN) | 10.8 |
| hand shower singer cold water 0.5Mpa(L/MIN) | 14.6 |



| | |
|------------------------|---------------------|
| Product sizes (cm) | 33*19.5*10.5 |
| Weight (kg) | 2.5 |
| Guarantee | 5 years |
| Max Preasure (bar) | 5 |
| Min Preasure (bar) | 0.5 |
| Optimum preasure (bar) | 1-4 (Recommended 3) |
| Max. temperature | 85°C |
| Min temperature | 65°C |

CERTIFIES

That all our products, provided that they are used in normal conditions or installed in accordance with current standards, are guaranteed against any manufacturing defect for a period of five years, except for products purchased before January 1, 2020, which will have the mand atory coverage of 2 years from the date of invoice.

Requirements and exclusions

Failure to comply with the instructions for assembly, use and maintenance of our products on the packaging and in our catalogue and published on our website: www.imexproducts.es, releases IMEX PRODUCTS, S.L. from any liability.

In any case, the acceptance of the defect by our technical department is necessary. In addition, transport costs will be charged only in the event that on IMEX PRODUCTS, S.L. technician determines the proper functioning of our products.

IMEX PRODUCTS, S.L. will decide to repair the product or replace it. It will be necessary to present the purchase invoice.

Assemnly, maintenance or repairs carried out by non-specoalists re excluded from the warranty.

Wearing parts such as hoses, handles, seals, filters, aerators, etc. are not covered by the warranty.



PRODUCT INFORMATION SUMMARY

IMEX
BATH EQUIPMENTS

GÉNOVA
Series

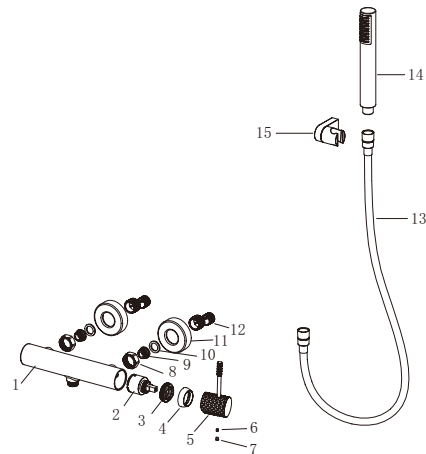
IMEX
BATH EQUIPMENTS



| Ref. | EAN | Finish |
|-------------|---------------|-------------------|
| BDG053-5 | 8435668034302 | Chrome |
| BDG053-5BGM | 8435668034319 | Black gun metal |
| BDG053-5NG | 8435668034326 | Matte black |
| BDG053-5ORC | 8435668034340 | Brushed rose gold |
| BDG053-5OC | 8435668034333 | Brushed gold |
| BDG053-5NQ | 8435668060172 | Brushed nickel |

GÉNOVA
Series

IMEX
BATH EQUIPMENTS



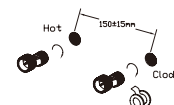
| CODE | NAME | MATERIAL | REF |
|------|---------------|----------|---------|
| 1 | Body | Brass | |
| 2 | Cartridge | 35mm | CRT006* |
| 3 | Nut | Brass | |
| 4 | Cover | ABS | |
| 5 | Handle | Brass | |
| 6 | Screw | SUS 304 | |
| 7 | Cover | ABS | |
| 8 | Nut | Brass | |
| 9 | Valve | SUS 304 | |
| 10 | Rubber washer | NBR | |
| 11 | Connector | SUS 304 | |
| 12 | Cabrio leg | SUS 304 | |
| 13 | Hose | PVC | FLX010* |
| 14 | Shower hand | ABS | MDR015* |
| 15 | Shower base | ABS | SMD007* |

* CONSULTAR PARA ACABADOS DE COLOR

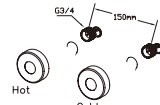
GÉNOVA
Series

IMEX
BATH EQUIPMENTS

Installing instruction



Step 1. Connect curved leg with the inlet pipe inside the wall



Step 2. Connect decorative cover to curved leg

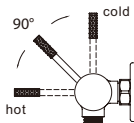


Step 3. Install shower faucet properly, and connect to curved leg on the wall



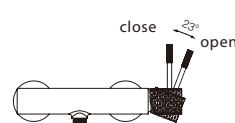
Step 4. Test function of shower set, clean the set

Usage function instruction



hot

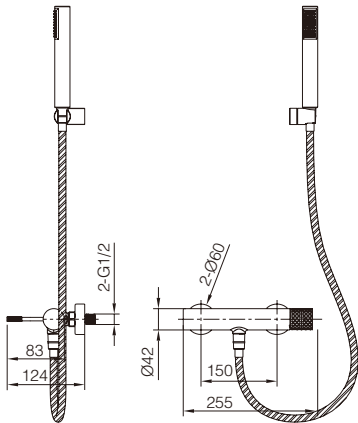
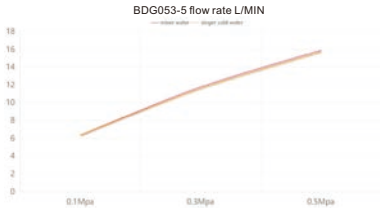
cold



close

open

| Detalles | |
|------------------------------------|----------|
| FLOW RATE REF | BDG053-5 |
| mixer water 0.1Mpa(L/MIN) | 6.37 |
| mixer water 0.3Mpa(L/MIN) | 11.76 |
| mixer water 0.5Mpa(L/MIN) | 15.9 |
| singer cold water 0.1Mpa(L/MIN) | 6.36 |
| singer cold water 0.3Mpa(L/MIN) | 11.58 |
| singer cold water 0.5Mpa(L/MIN) | 15.7 |



| | |
|-------------------------|---------------------|
| Product sizes (cm) | 28*16*12.2 |
| Weight (kg) | 1.95 |
| Guarantee | 5 years |
| Max Preassure (bar) | 5 |
| Min Preassure (bar) | 0.5 |
| Optimum preassure (bar) | 1-4 (Recommended 3) |
| Max. temperature | 85°C |
| Min temperature | 65°C |

CERTIFIES

That all our products, provided that they are used in normal conditions or installed in accordance with current standards, are guaranteed against any manufacturing defect for a period of five years, except for products purchased before January 1, 2020, which will have the mandatory coverage of 2 years from the date of invoice.

Requirements and exclusions

Failure to comply with the instructions for assembly, use and maintenance of our products on the packaging and in our catalogue and published on our website: www.imexproducts.es, releases IMEX PRODUCTS, S.L. from any liability.

In any case, the acceptance of the defect by our technical department is necessary. In addition, transport costs will be charged only in the event that on IMEX PRODUCTS, S.L. technician determines the proper functioning of our products.

IMEX PRODUCTS, S.L. will decide to repair the product or replace it. It will be necessary to present the purchase invoice.

Assembly, maintenance or repairs carried out by non-specoalists re excluded from the warranty.

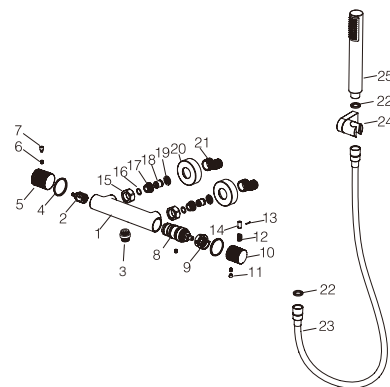
Wearing parts such as hoses, handles, seals, filters, aerators, etc. are not covered by the warranty.



PRODUCT INFORMATION SUMMARY



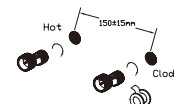
| Ref. | EAN | Finish |
|-------------|---------------|-------------------|
| BTG053-5 | 8435668042901 | Chrome |
| BTG053-5BGM | 8435668042918 | Black gun metal |
| BTG053-5NG | 8435668042925 | Matte black |
| BTG053-5ORC | 8435668042949 | Brushed rose gold |
| BTG053-5OC | 8435668042932 | Brushed gold |
| BTG053-5NQ | 8435668060202 | Brushed niquel |



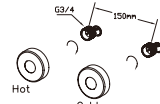
| CODE | NAME | MATERIAL | REF | CODE | NAME | MATERIAL | REF |
|------|---------------|----------|---------|------|---------------|---------------|---------|
| 1 | Body | Brass | | 20 | Cover | SUS 304 | |
| 2 | Cartridge | 21mm | | 21 | Cabrio leg | SUS 304 | |
| 3 | Connect | Brass | | 22 | Rubber washer | NBR | |
| 4 | Washer | POM | | 23 | Hose | SUS 304 / PVC | FLX005* |
| 5 | Handle | Brass | | 24 | Shower seat | ABS | SMD007* |
| 6 | Screw | SUS 304 | | 25 | Shower hand | ABS | MDR015* |
| 7 | Handle lever | Brass | | | | | |
| 8 | Cartridge | 32mm | CRT012* | | | | |
| 9 | Washer | POM | | | | | |
| 10 | Handle | Brass | | | | | |
| 11 | Cover | ABS | | | | | |
| 12 | Spring | SUS 304 | | | | | |
| 13 | Pin | SUS 304 | | | | | |
| 14 | Handle lever | Brass | | | | | |
| 15 | Nut | Brass | | | | | |
| 16 | O-ring | NBR | | | | | |
| 17 | Screw | SUS 304 | | | | | |
| 18 | Valve | ABS | | | | | |
| 19 | Rubber washer | NBR | | | | | |

* CONSULTAR PARA ACABADOS DE COLOR

Installing instruction



Step 1.Connect curved leg with the inlet pipe inside the wall



Step 2.Connect decorate cover to curved leg

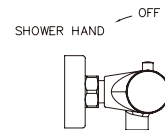
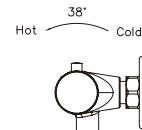


Step 3.Install shower faucet properly,and connect to curved leg on the wall

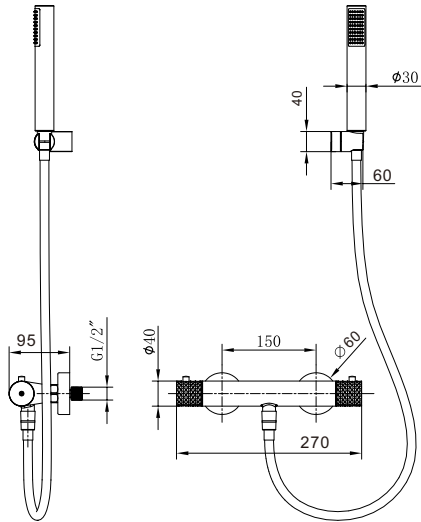
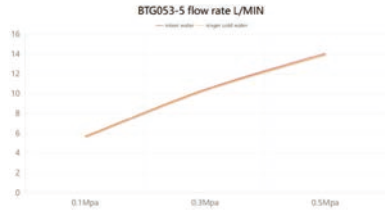


Step 4.Test function of shower set, clean the set

Usage function instruction



| FLOW RATE | |
|------------------------------------|----------|
| Detalles | |
| FLOW RATE REF | BTG053-5 |
| mixer water 0.1Mpa(L/MIN) | 5.71 |
| mixer water 0.3Mpa(L/MIN) | 10.44 |
| mixer water 0.5Mpa(L/MIN) | 14.1 |
| singer cold water 0.1Mpa(L/MIN) | 5.68 |
| singer cold water 0.3Mpa(L/MIN) | 10.39 |
| singer cold water 0.5Mpa(L/MIN) | 13.96 |



| | |
|-------------------------|---------------------|
| Product sizes (cm) | 33*19.5*10.5 |
| Weight (kg) | 2.2 |
| Guarantee | 5 years |
| Max Preassure (bar) | 5 |
| Min Preassure (bar) | 0.5 |
| Optimum preassure (bar) | 1-4 (Recommended 3) |
| Max. temperature | 85°C |
| Min temperature | 65°C |

CERTIFIES

That all our products, provided that they are used in normal conditions or installed in accordance with current standards, are guaranteed against any manufacturing defect for a period of five years, except for products purchased before January 1, 2020, which will have the mand atory coverage of 2 years from the date of invoice.

Requirements and exclusions

Failure to comply with the instructions for assembly, use and maintenance of our products on the packaging and in our catalogue and published on our website: www.imexproducts.es, releases IMEX PRODUCTS, S.L. from any liability.

In any case, the acceptance of the defect by our technical department is necessary. In addition, transport costs will be charged only in the event that on IMEX PRODUCTS, S.L. technician determines the proper functioning of our products.

IMEX PRODUCTS, S.L. will decide to repair the product or replace it. It will be necessary to present the purchase invoice.

Assembly, maintenance or repairs carried out by non-specoalists re excluded from the warranty.

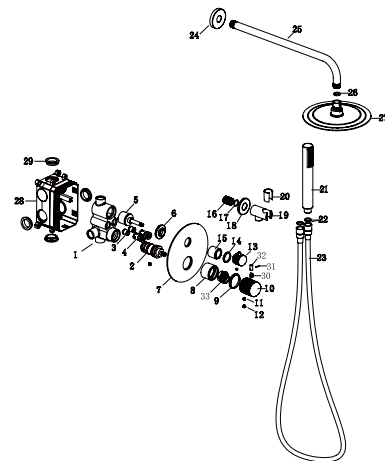
Wearing parts such as hoses, handles, seals, filters, aerators, etc. are not covered by the warranty.



PRODUCT INFORMATION SUMMARY



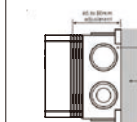
| Ref. | EAN | Finish |
|------------|---------------|-------------------|
| GTG053 | 8435668043205 | Chrome |
| GTG053-BGM | 8435668043212 | Black gun metal |
| GTG053-NG | 8435668043229 | Matte black |
| GTG053-ORC | 8435668043243 | Brushed rose gold |
| GTG053-OC | 8435668043236 | Brushed gold |
| GTG053-NQ | 8435668060301 | Brushed niquel |



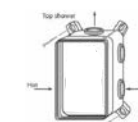
| CODE | NAME | MATERIAL | REF | CODE | NAME | MATERIAL | REF |
|------|------------------|----------|---------|------|----------------|---------------|---------|
| 1 | Body | Brass | | 20 | Plastic washer | Plastic | |
| 2 | Cartridge | 32mm | CRT012* | 21 | Shower hand | Plastic | MDR015* |
| 3 | Check valve | ASSY | | 22 | Rubber ring | NBR | |
| 4 | Control valve | ASSY | | 23 | Hose | SUS 304 / PVC | FLX005* |
| 5 | Cartridge | 33mm up | CRT067* | 24 | Cover | SUS 304 | |
| 6 | Nut | Brass | | 25 | Hose | SUS 304 | BPR001* |
| 7 | Decorative plate | SUS 304 | | 26 | Rubber ring | NBR | |
| 8 | Cartridge cover | Brass | | 27 | Shower head | SUS 304 | RDN002* |
| 9 | Plastic washer | Plastic | | 28 | BOX | ABS | |
| 10 | Handle | Brass | | 29 | Rubber ring | NBR | |
| 11 | Screw | SUS 304 | | 30 | Spring | SUS 304 | |
| 12 | Button | ABS | | 31 | Pin | SUS 304 | |
| 13 | Handle | Brass | | 32 | Handle lever | Brass | |
| 14 | Plastic washer | Plastic | | 33 | Washer | POM | |
| 15 | Cover | Brass | | | | | |
| 16 | Connect | Brass | | | | | |
| 17 | O-ring | NBR | | | | | |
| 18 | Cover | Brass | | | | | |
| 19 | Body | Brass | | | | | |

* CONSULTAR PARA ACABADOS DE COLOR

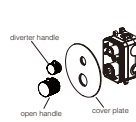
Installing instruction



Step 1. Connect curved leg with the inlet pipe inside the wall



Step 2. Connect decorative cover to curved leg



Step 3. Install shower faucet properly, and connect to curved leg on the wall



Step 4. Install shower pipe according to the distance of fix part

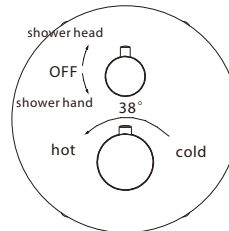


Step 5. Install shower hand and shower head to the set

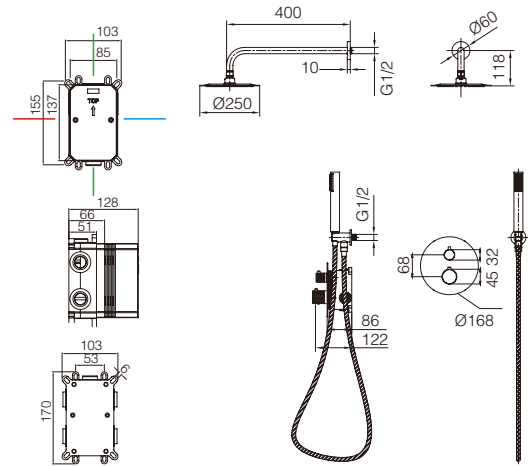
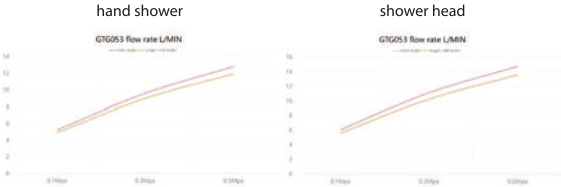


Step 6. Test function of shower set, clean the set

Usage function instruction



| FLOW RATE | |
|---|--------|
| Detalles | |
| FLOW RATE REF | GTG053 |
| hand shower mixer water 0.1Mpa(L/MIN) | 5.27 |
| hand shower mixer water 0.3Mpa(L/MIN) | 9.62 |
| hand shower mixer water 0.5Mpa(L/MIN) | 12.84 |
| hand shower singer cold water 0.1Mpa(L/MIN) | 4.95 |
| hand shower singer cold water 0.3Mpa(L/MIN) | 9.02 |
| hand shower singer cold water 0.5Mpa(L/MIN) | 11.95 |
| shower head mixer water 0.1Mpa(L/MIN) | 6.1 |
| shower head mixer water 0.3Mpa(L/MIN) | 11.16 |
| shower head mixer water 0.5Mpa(L/MIN) | 14.76 |
| shower head singer cold water 0.1Mpa(L/MIN) | 5.63 |
| shower head singer cold water 0.3Mpa(L/MIN) | 10.28 |
| shower head singer cold water 0.5Mpa(L/MIN) | 13.6 |



| | |
|------------------------|---------------------|
| Product sizes (cm) | 43*30*14 |
| Weight (kg) | 4.8 |
| Guarantee | 5 years |
| Max Preasure (bar) | 5 |
| Min Preasure (bar) | 0.5 |
| Optimum preasure (bar) | 1-4 (Recommended 3) |
| Max. temperature | 85°C |
| Min temperature | 65°C |

CERTIFIES

That all our products, provided that they are used in normal conditions or installed in accordance with current standards, are guaranteed against any manufacturing defect for a period of five years, except for products purchased before January 1, 2020, which will have the mand atory coverage of 2 years from the date of invoice.

Requirements and exclusions

Failure to comply with the instructions for assembly, use and maintenance of our products on the packaging and in our catalogue and published on our website: www.imexproducts.es, releases IMEX PRODUCTS, S.L. from any liability.

In any case, the acceptance of the defect by our technical department is necessary. In addition, transport costs will be charged only in the event that on IMEX PRODUCTS, S.L. technician determines the proper functioning of our products.

IMEX PRODUCTS, S.L. will decide to repair the product or replace it. It will be necessary to present the purchase invoice.

Assembly, maintenance or repairs carried out by non-specoalists re excluded from the warranty.

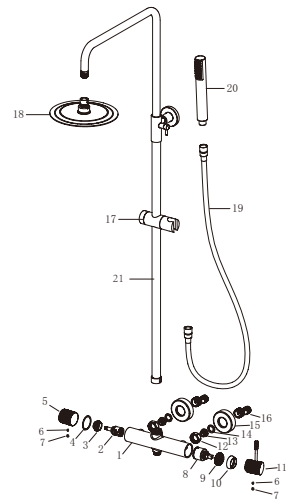
Wearing parts such as hoses, handles, seals, filters, aerators, etc. are not covered by the warranty.



PRODUCT INFORMATION SUMMARY



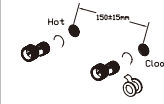
| Ref. | EAN | Finish |
|------------|---------------|-------------------|
| BDG053 | 8435668034050 | Chrome |
| BDG053/BGM | 8435668034067 | Black gun metal |
| BDG053/NG | 8435668034074 | Matte black |
| BDG053/ORC | 8435668034098 | Brushed rose gold |
| BDG053/OC | 8435668034081 | Brushed gold |
| BDG053/NQ | 8435668060141 | Brushed nickel |



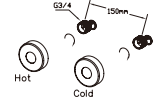
| CODE | NAME | MATERIAL | REF | CODE | NAME | MATERIAL | REF |
|------|-------------|----------|---------|------|-------------|---------------|----------|
| 1 | Body | Brass | | 16 | Cabrio leg | SUS 304 | |
| 2 | Cartridge | 25mm up | CRT068* | 17 | Slider | SUS 304 | AR00014* |
| 3 | Nut | Brass | | 18 | Shower head | SUS 304 | RDN0001* |
| 4 | Washer | POM | | 19 | Hose | SUS 304 / PVC | FLX0001* |
| 5 | Handle | Brass | | 20 | Shower hand | ABS | MDR015* |
| 6 | Screw | SUS 304 | | 21 | Pipe | SUS 304 | |
| 7 | Cover | ABS | | | | | |
| 8 | Cartridge | 35mm | CRT006* | | | | |
| 9 | Nut | Brass | | | | | |
| 10 | Cover | ABS | | | | | |
| 11 | Handle | Brass | | | | | |
| 12 | Nut | Brass | | | | | |
| 13 | Valve | SUS 304 | | | | | |
| 14 | Rubber ring | NBR | | | | | |
| 15 | Cover | SUS 304 | | | | | |

* CONSULTAR PARA ACABADOS DE COLOR

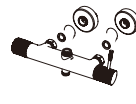
Installing instruction



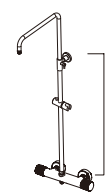
Step 1. Connect curved leg with the inlet pipe inside the wall



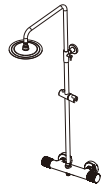
Step 2. Connect decorate cover to curved leg



Step 3. Install shower faucet properly and connect to curved leg on the wall



Step 4. Install shower pipe according to the distance of fix part

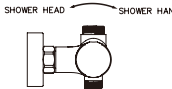
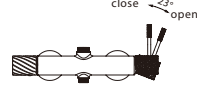
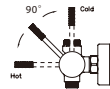


Step 5. Install shower hand and shower head to the set



Step 6. Test function of shower set, clean the set

Usage function instruction



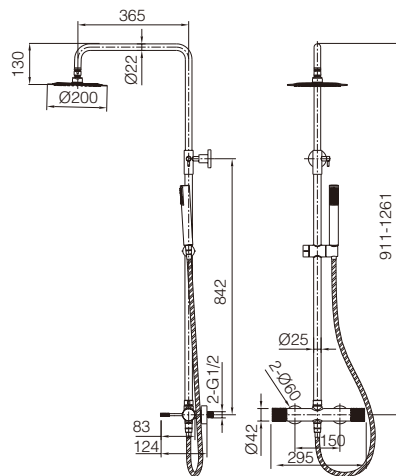
FLOW RATE

| Detalles | |
|---|--------|
| FLOW RATE REF | BDG053 |
| hand shower mixer water 0.1Mpa(L/MIN) | 6.03 |
| hand shower mixer water 0.3Mpa(L/MIN) | 10.95 |
| hand shower mixer water 0.5Mpa(L/MIN) | 14.84 |
| hand shower singer cold water 0.1Mpa(L/MIN) | 5.98 |
| hand shower singer cold water 0.3Mpa(L/MIN) | 10.86 |
| hand shower singer cold water 0.5Mpa(L/MIN) | 14.61 |
| shower head mixer water 0.1Mpa(L/MIN) | 8.92 |
| shower head mixer water 0.3Mpa(L/MIN) | 15.58 |
| shower head mixer water 0.5Mpa(L/MIN) | 20.27 |
| shower head singer cold water 0.1Mpa(L/MIN) | 8.76 |
| shower head singer cold water 0.3Mpa(L/MIN) | 15.24 |
| shower head singer cold water 0.5Mpa(L/MIN) | 19.75 |

hand shower



shower head



| | |
|-------------------------|---------------------|
| Product sizes (cm) | 42.5*13.3*90 |
| Weight (kg) | 5.6 |
| Guarantee | 5 years |
| Max Preessure (bar) | 5 |
| Min Preessure (bar) | 0.5 |
| Optimum preessure (bar) | 1-4 (Recommended 3) |
| Max. temperature | 85°C |
| Min temperature | 65°C |

CERTIFIES

That all our products, provided that they are used in normal conditions or installed in accordance with current standards, are guaranteed against any manufacturing defect for a period of five years, except for products purchased before January 1, 2020, which will have the mandatory coverage of 2 years from the date of invoice.

Requirements and exclusions

Failure to comply with the instructions for assembly, use and maintenance of our products on the packaging and in our catalogue and published on our website: www.imexproducts.es, releases IMEX PRODUCTS, S.L. from any liability.

In any case, the acceptance of the defect by our technical department is necessary. In addition, transport costs will be charged only in the event that on IMEX PRODUCTS, S.L. technician determines the proper functioning of our products.

IMEX PRODUCTS, S.L. will decide to repair the product or replace it. It will be necessary to present the purchase invoice.

Assembly, maintenance or repairs carried out by non-specialists are excluded from the warranty.

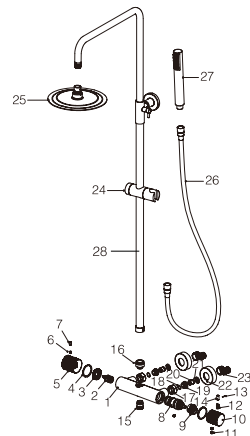
Wearing parts such as hoses, handles, seals, filters, aerators, etc. are not covered by the warranty.



PRODUCT INFORMATION SUMMARY



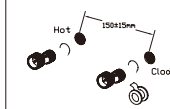
| Ref. | EAN | Finish |
|------------|---------------|-------------------|
| BTG053 | 8435668034876 | Chrome |
| BTG053-BGM | 8435668034883 | Black gun metal |
| BTG053-NG | 8435668034890 | Matte black |
| BTG053-ORC | 8435668034913 | Brushed rose gold |
| BTG053-OC | 8435668034906 | Brushed gold |
| BTG053-NQ | 8435668060189 | Brushed niquel |



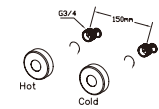
| CODE | NAME | MATERIAL | REF | CODE | NAME | MATERIAL | REF |
|------|--------------|----------|---------|------|---------------|---------------|---------|
| 1 | Body | Brass | | 20 | Valve | ABS | |
| 2 | Cartridge | 25mm up | | 21 | Rubber washer | NBR | |
| 3 | Nut | Brass | | 22 | Cover | SUS 304 | |
| 4 | Washer | POM | | 23 | Cabrio leg | SUS 304 | |
| 5 | Handle | Brass | | 24 | Slider | ABS | RR0014* |
| 6 | Screw | SUS 304 | | 25 | Shower head | SUS 304 | RDN001* |
| 7 | Handle lever | Brass | | 26 | Hose | SUS 304 / PVC | FLX005* |
| 8 | Cartridge | 32mm | CRT012* | 27 | Shower hand | ABS | MDR015* |
| 9 | Washer | POM | | 28 | Pipe | SUS 304 | |
| 10 | Handle | Brass | | | | | |
| 11 | Cover | ABS | | | | | |
| 12 | Spring | SUS 304 | | | | | |
| 13 | Pin | SUS 304 | | | | | |
| 14 | Handle lever | Brass | | | | | |
| 15 | Connect | Brass | | | | | |
| 16 | Connect | Brass | | | | | |
| 17 | Nut | Brass | | | | | |
| 18 | O-ring | NBR | | | | | |
| 19 | Screw | SUS 304 | | | | | |

* CONSULTAR PARA ACABADOS DE COLOR

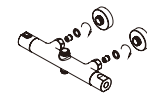
Installing instruction



Step 1. Connect curved leg with the inlet pipe inside the wall



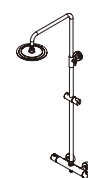
Step 2. Connect decorative cover to curved leg



Step 3. Install shower faucet properly and connect to curved leg on the wall



Step 4. Install shower pipe according to the distance of fix part

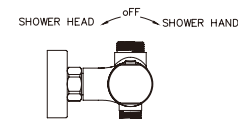
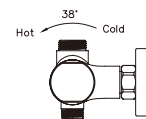


Step 5. Install shower hand and shower head to the set

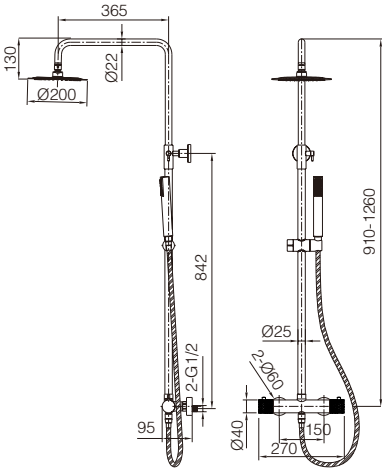
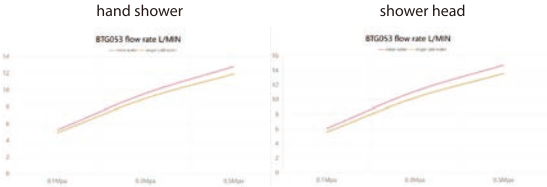


Step 6. Test function of shower set, clean the set

Usage function instruction



| FLOW RATE | |
|---|--------|
| Detalles | |
| FLOW RATE REF | BTG053 |
| hand shower mixer water 0.1Mpa(L/MIN) | 5.27 |
| hand shower mixer water 0.3Mpa(L/MIN) | 9.62 |
| hand shower mixer water 0.5Mpa(L/MIN) | 12.84 |
| hand shower singer cold water 0.1Mpa(L/MIN) | 4.95 |
| hand shower singer cold water 0.3Mpa(L/MIN) | 9.02 |
| hand shower singer cold water 0.5Mpa(L/MIN) | 11.95 |
| shower head mixer water 0.1Mpa(L/MIN) | 6.1 |
| shower head mixer water 0.3Mpa(L/MIN) | 11.16 |
| shower head mixer water 0.5Mpa(L/MIN) | 14.76 |
| shower head singer cold water 0.1Mpa(L/MIN) | 5.63 |
| shower head singer cold water 0.3Mpa(L/MIN) | 10.28 |
| shower head singer cold water 0.5Mpa(L/MIN) | 13.6 |



| | |
|------------------------|---------------------|
| Product sizes (cm) | 42.5*13.3*90 |
| Weight (kg) | 5.6 |
| Guarantee | 5 years |
| Max Preasure (bar) | 5 |
| Min Preasure (bar) | 0.5 |
| Optimum preasure (bar) | 1-4 (Recommended 3) |
| Max. temperature | 85°C |
| Min temperature | 65°C |

CERTIFIES

That all our products, provided that they are used in normal conditions or installed in accordance with current standards, are guaranteed against any manufacturing defect for a period of five years, except for products purchased before January 1, 2020, which will have the mand atory coverage of 2 years from the date of invoice.

Requirements and exclusions

Failure to comply with the instructions for assembly, use and maintenance of our products on the packaging and in our catalogue and published on our website: www.imexproducts.es, releases IMEX PRODUCTS, S.L. from any liability.

In any case, the acceptance of the defect by our technical department is necessary. In addition, transport costs will be charged only in the event that on IMEX PRODUCTS, S.L. technician determines the proper functioning of our products.

IMEX PRODUCTS, S.L. will decide to repair the product or replace it. It will be necessary to present the purchase invoice.

Assemnly, maintenance or repairs carried out by non-specoalists re excluded from the warranty.

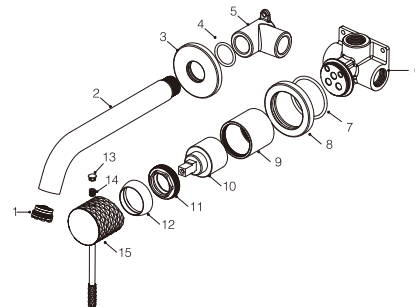
Wearing parts such as hoses, handles, seals, filters, aerators, etc. are not covered by the warranty.



PRODUCT INFORMATION SUMMARY



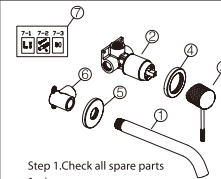
| Ref. | EAN | Finish |
|------------|---------------|-------------------|
| GLG053 | 8435668035224 | Chrome |
| GLG053-BGM | 8435668035231 | Black gun metal |
| GLG053-NG | 8435668035248 | Matte black |
| GLG053-ORC | 8435668035262 | Brushed rose gold |
| GLG053-OC | 8435668035255 | Brushed gold |
| GLG053-NQ | 8435668060288 | Brushed niquel |



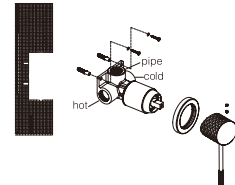
| CODE | NAME | MATERIAL | REF |
|------|-----------------|----------|-------------|
| 1 | Aerator | 16.5x1mm | SAT-AIR060* |
| 2 | Outlet pipe | Brass | |
| 3 | Cover | Brass | |
| 4 | O-ring | NBR | |
| 5 | Connector | Brass | |
| 6 | Body | Brass | |
| 7 | O-ring | NBR | |
| 8 | Cover | Brass | |
| 9 | Cartridge cover | Brass | |
| 10 | Cartridge | 35mm | CRT018* |
| 11 | Nut | Brass | |
| 12 | Cover | ABS | |
| 13 | Screw | SUS 304 | |
| 14 | Cover | ABS | |
| 15 | Handle | Brass | |

* CONSULTAR PARA ACABADOS DE COLOR

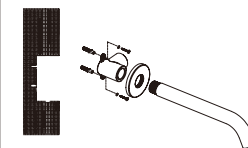
Installing instruction



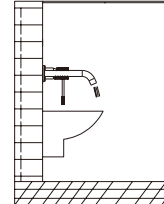
- Step 1. Check all spare parts
1-pipe
2-body to handle
3-handle
4-cover plate of handle
5-cover plate of pipe
6-body to pipe
7-spare part bag



- Step 2. Dig hole for body to handle
2.1-Hole size 50*50mm, depth from 45 to 75mm
2.2-Dig two 6mm holes with 54mm distance
2.3- Assemble spare parts as picture shows

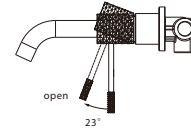
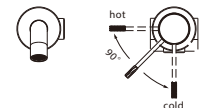


- Step 3. Dig hole for body to pipe
3.1-Hole size 45*45mm, depth 40mm
3.2-Dig two 6mm holes with 35mm distance
3.3- Assemble spare parts as picture shows

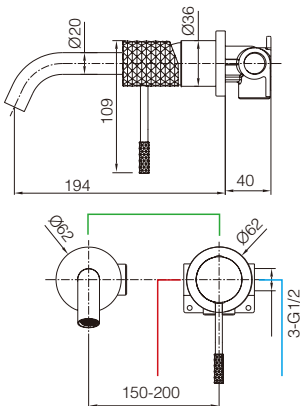
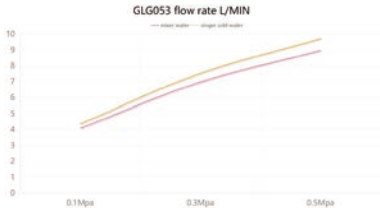


- Step 4. Connect inside pipe and test for leak checking

Usage function instruction



| Detalles | |
|------------------------------------|--------|
| FLOW RATE REF | GLG053 |
| mixer water 0.1Mpa(L/MIN) | 4.09 |
| mixer water 0.3Mpa(L/MIN) | 6.97 |
| mixer water 0.5Mpa(L/MIN) | 8.97 |
| singer cold water 0.1Mpa(L/MIN) | 4.36 |
| singer cold water 0.3Mpa(L/MIN) | 7.52 |
| singer cold water 0.5Mpa(L/MIN) | 9.71 |



| | |
|-------------------------|---------------------|
| Product sizes (cm) | 29*17.5*6.7 |
| Weight (kg) | 1.7 |
| Guarantee | 5 years |
| Max Preassure (bar) | 5 |
| Min Preassure (bar) | 0.5 |
| Optimum preassure (bar) | 1-4 (Recommended 3) |
| Max. temperature | 85°C |
| Min temperature | 65°C |

CERTIFIES

That all our products, provided that they are used in normal conditions or installed in accordance with current standards, are guaranteed against any manufacturing defect for a period of five years, except for products purchased before January 1, 2020, which will have the mand atory coverage of 2 years from the date of invoice.

Requirements and exclusions

Failure to comply with the instructions for assembly, use and maintenance of our products on the packaging and in our catalogue and published on our website: www.imexproducts.es, releases IMEX PRODUCTS, S.L. from any liability.

In any case, the acceptance of the defect by our technical department is necessary. In addition, transport costs will be charged only in the event that on IMEX PRODUCTS, S.L. technician determines the proper functioning of our products.

IMEX PRODUCTS, S.L. will decide to repair the product or replace it. It will be necessary to present the purchase invoice.

Assembly, maintenance or repairs carried out by non-specoalists re excluded from the warranty.

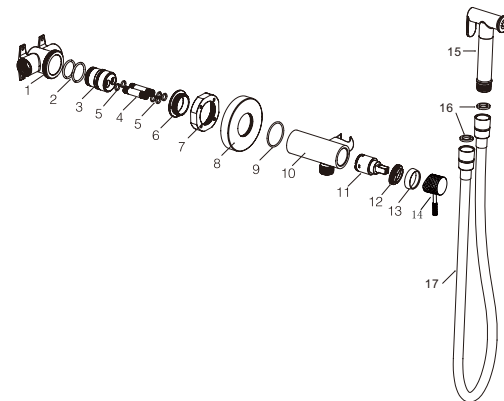
Wearing parts such as hoses, handles, seals, filters, aerators, etc. are not covered by the warranty.



PRODUCT INFORMATION SUMMARY



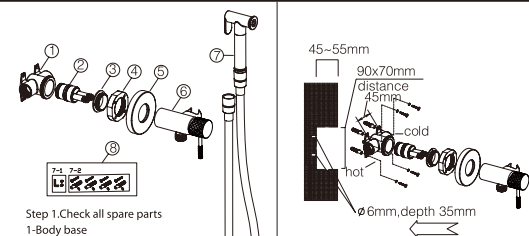
| Ref. | EAN | Finish |
|------------|---------------|-------------------|
| RDG053 | 8435668043946 | Chrome |
| RDG053/BGM | 8435668043953 | Black gun metal |
| RDG053/NG | 8435668043960 | Matte black |
| RDG053/ORC | 8435668043984 | Brushed rose gold |
| RDG053/OC | 8435668043977 | Brushed gold |
| RDG053/NQ | 8435668060318 | Brushed nickel |



| CODE | NAME | MATERIAL | REF |
|------|----------------|-------------|---------|
| 1 | Body | Brass | |
| 2 | O-ring | NBR | |
| 3 | Connect | Brass | |
| 4 | Hose | Brass | |
| 5 | O-ring | NBR | |
| 6 | Connect | Brass | |
| 7 | Nut | Brass | |
| 8 | Cover | Brass | |
| 9 | O-ring | NBR | |
| 10 | Body | Brass | |
| 11 | Cartridge | 25mm | CRT018* |
| 12 | Nut | Brass | |
| 13 | Decorative cup | ABS | |
| 14 | Handle | Brass | |
| 15 | Spray gun | SUS 304 | SMD005* |
| 16 | Rubber | NBR | |
| 17 | Hose | SUS 304/PVC | FLX008* |

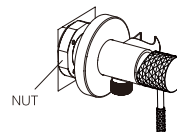
* CONSULTAR PARA ACABADOS DE COLOR

Installing instruction



Step 1.Check all spare parts
1-Body base
2-Valve core
3-Connoter
4-Nut
5-Cover
6-Body
7-Pipe
8-Spare part bag

Step 2.Dig hole for body to handle
2.1-Hole size 90*70mm,depth from 45 to 55mm
2.2-Dig two 6mm holes with 45mm distance
2.3- Assemble spare parts as picture shows

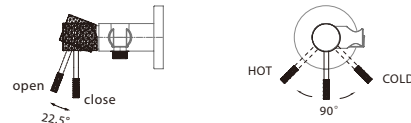


Step 3.Lock the nuts on the body base.

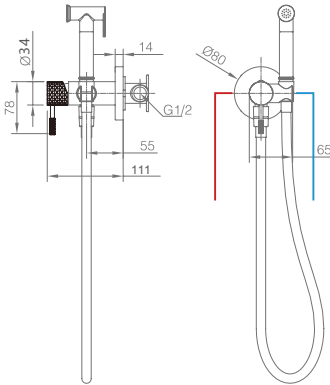
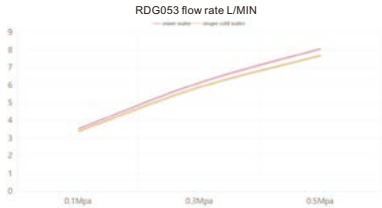


Step 4.Connect inside pipe and test for leak checking

Usage function instruction



| Detalles | |
|------------------------------------|--------|
| FLOW RATE REF | RDG053 |
| mixer water 0.1Mpa(L/MIN) | 3.54 |
| mixer water 0.3Mpa(L/MIN) | 6.15 |
| mixer water 0.5Mpa(L/MIN) | 8.08 |
| singer cold water 0.1Mpa(L/MIN) | 3.4 |
| singer cold water 0.3Mpa(L/MIN) | 5.9 |
| singer cold water 0.5Mpa(L/MIN) | 7.69 |



| | |
|-------------------------|---------------------|
| Product sizes (cm) | 19.5*13*15 |
| Weight (kg) | 1.7 |
| Guarantee | 5 years |
| Max Preassure (bar) | 5 |
| Min Preassure (bar) | 0.5 |
| Optimum preassure (bar) | 1-4 (Recommended 3) |
| Max. temperature | 85°C |
| Min temperature | 65°C |

CERTIFIES

That all our products, provided that they are used in normal conditions or installed in accordance with current standards, are guaranteed against any manufacturing defect for a period of five years, except for products purchased before January 1, 2020, which will have the mand atory coverage of 2 years from the date of invoice.

Requirements and exclusions

Failure to comply with the instructions for assembly, use and maintenance of our products on the packaging and in our catalogue and published on our website: www.imexproducts.es, releases IMEX PRODUCTS, S.L. from any liability.

In any case, the acceptance of the defect by our technical department is necessary. In addition, transport costs will be charged only in the event that on IMEX PRODUCTS, S.L. technician determines the proper functioning of our products.

IMEX PRODUCTS, S.L. will decide to repair the product or replace it. It will be necessary to present the purchase invoice.

Assembly, maintenance or repairs carried out by non-specoalists re excluded from the warranty.

Wearing parts such as hoses, handles, seals, filters, aerators, etc. are not covered by the warranty.

